



User's Manual for Receiver with Remote Control and USB

PLEASE INSTALL SOFTWARE BEFORE CONNECTING TO YOUR COMPUTER!

1.Introduction

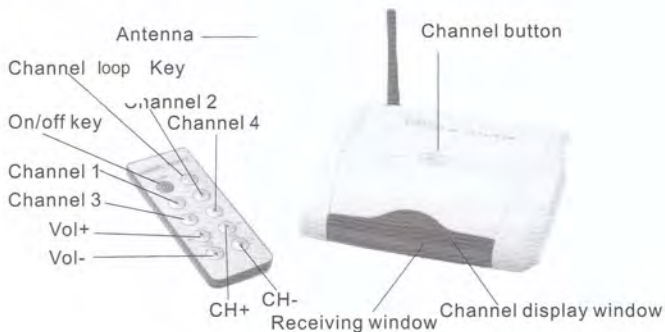
This receiver uses ISM frequency, 2400 - 2483MHz to get the video and audio signals transmitted by the wireless camera. The video signal can be received, recorded, and played back on a personal computer as well as onto a handheld portable receiver.

The device can also be connected to a television or monitor, allowing it to be set up as a surveillance/security system.

2.Specification

- Supports Windows XP
- Supports USB 2.0
- Supports Audio
- Supports long-distance surveillance and network video phone through the use of third party software
- ISM frequency: 2400-2483MHz

- Receiving frequency: CH1 = 2414MHz, CH2 = 2432MHz, CH3 = 2450MHz, CH4 = 2468MHz
- Receiving sensitivity: --85dBm
- Intermediate frequency: 480MHz
- Video output: 1Vp-p
- Audio output: 2.5Vp-p (maximum)
- Remote control distance: 6-8m
- High speed picture compression
- Display rate: 30f/s
- Resolution: 640x80, 320x240
- Power adapter: PC model: USB power, no power adapter needed, Monitor/TV model: DC5V/500mA
- Size: 120x88x30mm
- Working temperature: 0~40°C





4. Installation and usage (Monitor/TV)

- 1). Connect the power adapter to the wireless camera firmly, then insert the power adapter into the power outlet.
- 2). If installing two or more wireless cameras, please keep them at least 2m away from each other or they will cause interference with each other resulting in a poor picture. Note: This applies to the receiver as well.
- 3). Rotate the antenna to fit the desired space, keeping it as vertical as possible for best signal quality.
- 4). Connect the A/V cords to the receiver and your monitor or television of choice.
- 5). Plug the power adapter into the wall and into the USB connector of the receiver. The channel display window should now show a red dot.
- 6). Turn the monitor or television on and ensure that you have the proper input settings selected.

7). Controller Operation

- A. Power on: When the device is off, press the button once and it will power on. It will display Channel 1.
- B. Channel Change: When the device is on, press either the Ch+ or Ch- button briefly and it will cycle to the next channel.
- C. Channel Loop Mode: Press the loop button for ~ 1-2 seconds and release it. The receiver will enter the channel loop mode automatically. The red light on the receiver will begin to blink and in 5 seconds it will automatically switch to the next channel.
- D. Power Off: When the unit is on, pressing the Power On/Off button for 3 seconds (until the channel shows a red dot) will turn the unit off.

5. Driver Setup (PC)

1). Minimum Requirements

- **Operating System: Windows XP**
- **DirectX 9 or later**
- **Intel Pentium III 800MHz or AMD Athlon or better**
- **128MB ram (256 Recommended)**
- **CD-Rom Drive**
- **USB Interface**
- **Audio Driver**
- **100MB hard disc space (1GB for recording)**

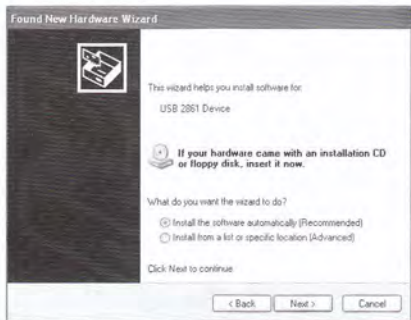
2. Installation Based on Windows XP SP2

- 2. Connect one end of the USB cord to the device and the other to your PC. Your PC should automatically detect the device.**

The "Found New Hardware Wizard" will be shown on the screen. It will ask if you want to connect to Windows Update to search for software, please click "No, not this time" then click next to continue.



b. When the Wizard asks you to install "USB 2861 device" please insert the software disc into the CD-Rom drive. Choose "Install the software automatically (Recommended)" and click next.



c. Click "continue anyway" to skip the windows text and continue.



d. Click "finish"



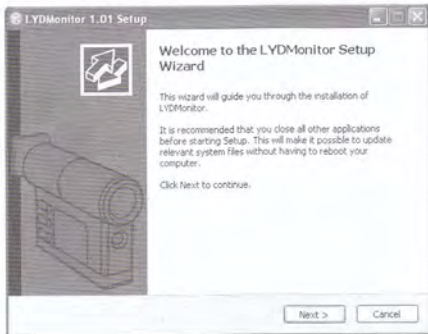
e. Wait for a moment ,the Wizard system will install "USB EMP Audio Device" automatically for you.

6. INSTALLATION OF THE SOFTWARE

- a. Open "My Computer" then go open the drive containing the software disc. Within that folder open the "Monitor" folder and double click "Monitor" to begin installing the monitor driver software. Choose the language suitable for you and then click "OK".



- b. When "Welcome to Monitor Setup Wizard" pops up, click "Next". (If it asks to install "Microsoft Direct X" then agree to do so, running dxsetup.exe and then following the on-screen instructions to finish installing both Microsoft Direct X and the Monitor software.



- C. When asked for the install location, click "Next". The proper path by default is C:\Program Files\Monitor if you want to change the install location, click "Browse..." and choose your desired location.



d. Single click "Install"



e. Click "Finish"

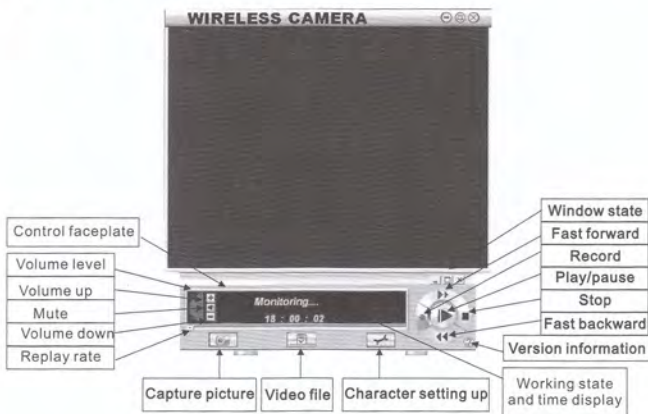


7.The operation of "Monitor"




1).Start

A. Insert one end of the USB line into the socket of the PC, the other to the receiver. Double click "Monitor", the program will begin and enter into the surveillance model.

B.The main window







C.The window state

You can click  to minimize the window,  to maximize it,  to close it.

2) .Setting up

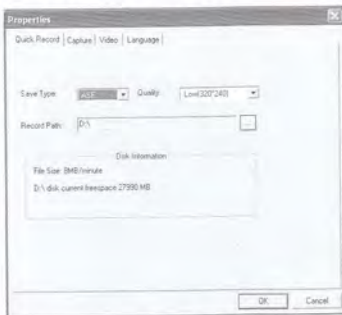
A.volume set up

You can click  or  to turn the volume up or down,click  to mute.You can also alter the volume by dragging 

B. Character Set up

- Click  to show the character setting window

a.The set up of "Quick Record"



Save type: Choose the video file save type ,ASF or AVI


Quality:ASF can change the quality of the compress rate:
high(320x240), middle(320x240),low(320x240),
acquiesced(320x240)

Record path: If you want to save the recorded file in another place, please single click and choose your favorite location. the recorded file is named after the current time, for example, 060720_181316. Asf means the program was founded at 18:13' 16" July 22nd, 2006.

Disk information: This item will show the used room and balance room per second of the program according to the saving type and quality.

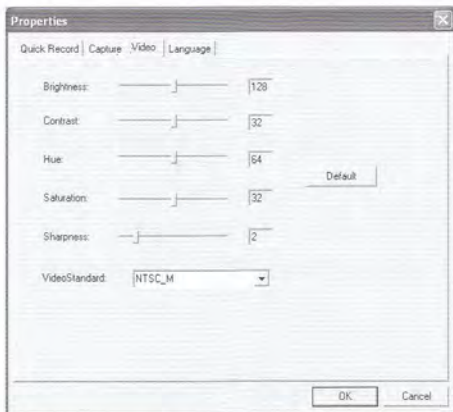
b. The setting up of "Capture"



- **Grab picture to:** set up the picture saving location. If you want to save it in another place, single click  and select the picture saving folder.

- The picture saved is named after the current time. For example, 2006720181913.bmp means 18:13' 16" of July 22nd, 2006.

c. Video set up



- You can adjust the brightness, contrast, hue, saturation and sharpness to optimize the picture.
- Video Standard: Please choose it according to your camera, for example, if your camera is NTSC system, you should choose NTSC-M. If your camera is PAL system, you should choose PAL-I, ect.

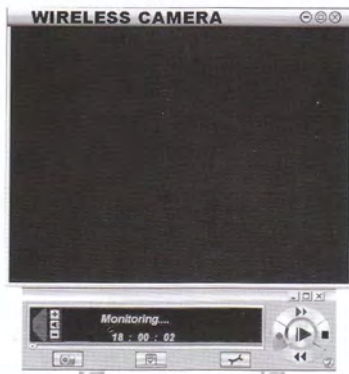
d. Language selection



- Support Windows English and simple Chinese operation system. (Notice: simple Chinese is not usable unless your Windows operation system is Chinese.)


3). Usage

A. Surveillance mode




- The main display window shows the picture transmitted by the wireless camera, and the control faceplate shows the current state and time.
- The channel button on the remote control make the receiver's frequency comply with the transmitter, or the channel button on the receiver make the number in the display window comply with the transmitter.


B. Capturing pictures

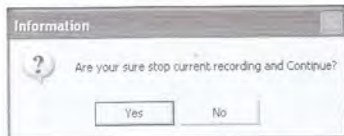
You can capture pictures in the video, click  to take one and save it in your folder.

C. Recording

a. Click  to begin recording

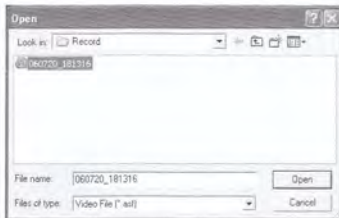


b. Click  to stop recording, it will ask you whether you are sure to stop current recording.

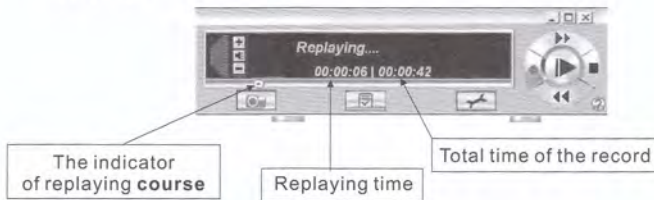


D. Replay the recorded file

a. Single click  to open the record window





- Please choose suitable type such as: Video File(*.asf) or Video File(*.avi) `
 - Please choose the recorded file you want to replay ,and click "Open".
- b. The main display window shows the contents of recorded file, the control faceplate shows the current state and re-playing time.



- You can click and drag it to different replaying place, click to stop replaying.
- Single click to fast forward at 2x the replaying speed **00:00:10 | 00:00:42 >> 2** ,double clicks for four times,three clicks for eight times. for fast backward.

c. After finishing replaying a file, the player will default back to the beginning.



- You can single click  to continue replaying the current file again, or single click  to go back to the surveillance state.

8. Problems and solutions

1. Receiving

- 1). The light in the channel display window does not shine:
please check whether the power adapter and the receiver link tightly, or the power switch has been turned on.
- 2). Can not receive picture or can not receive clear picture
 - a. Please check whether the camera has been powered on.
 - b. Please check whether the camera is too far away from the receiver, whether there are magnetic obstacles between them. (such as steel construction can seriously obstruct the transmission signal)
 - c. Please check whether the frequency of the camera has been matched with that of the camera (make sure there should not

- be two transmitter with different frequency in the limited distance, which may cause interference or bad receiving picture), whether the antenna has been stretched out.
- d. The antenna of the receiver should be far away from magnetic obstacles
 - e. Other items transmitting on the same frequency with high power or nearby radio stations broadcasting may cause interference for the receiver.

2. Software

1). No picture in the main display window

Please make sure the number in the channel display window has been matched with the frequency of the transmitter and the camera is working right.

2). Bad picture

Please make sure the TV system of the camera has been matched with that of the LYDMonitor. Check the video format.

3). Bad record

please look at the set of 7-2)-B check the setting up, and change the quality of the recorded file.

4). The size of the recording.

If you choose AVI with high quality to save the recordings, large amounts of the hard disc will be used. Please select the record saving quality in accordance with the space on your hard disc drive.